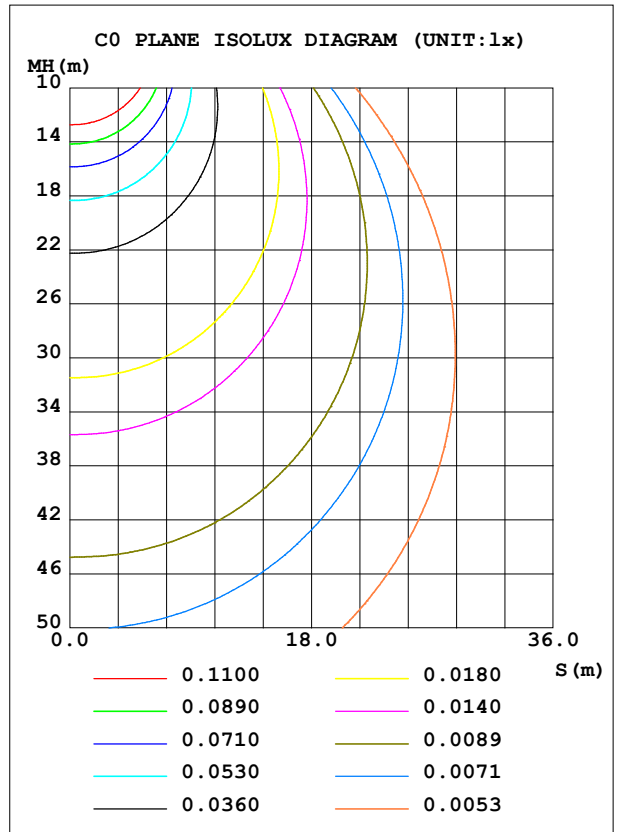
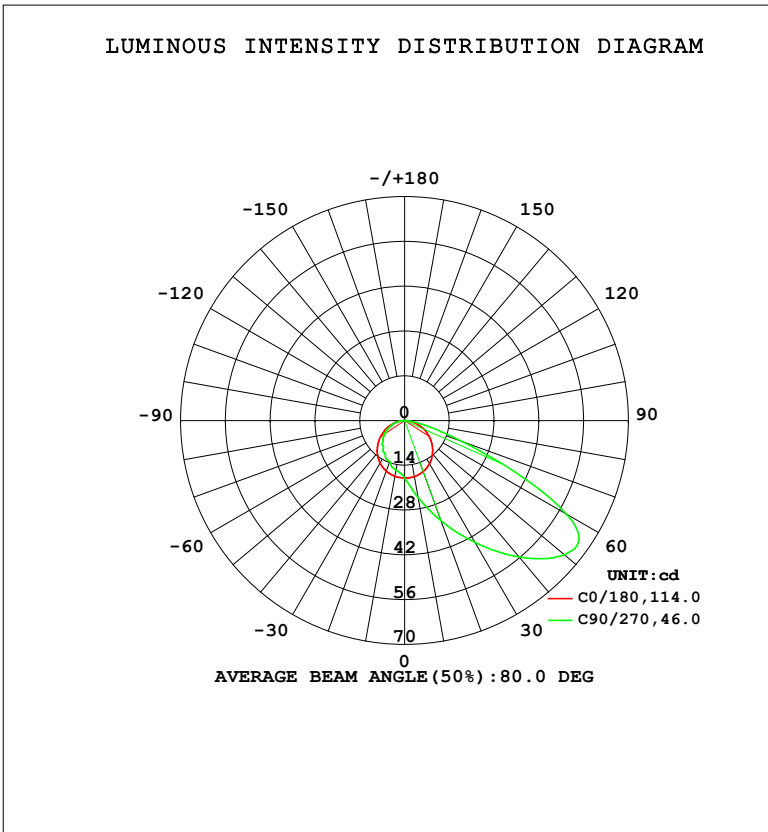


LUMINAIRE PHOTOMETRIC TEST REPORT

Test:U:24.105V I:0.1340A P:3.0753W PF:0.9524 Freq:59.98Hz		
UTHDi:0.00% ITHDi:0.00% KDisp:0 Lamp Flux:89.7758x1 lm		
NAME: LSD09-5CCT-24V-WH	TYPE:	WEIGHT:
SPEC.: 5000K	DIM.:	SERIAL No.:
MFR.: LTS	SUR.:	Shielding Angle:

DATA OF LAMP		PHOTOMETRIC DATA			
MODEL	LSD09-5CCT-24V-WH	Imax (cd)	66.60	S/MH (C0/180)	1.27
NOMINAL POWER (W)	2,5	LOR (%)	100.0	S/MH (C90/270)	1.05
RATED VOLTAGE (V)	24	TOTAL FLUX (lm)	89.776	$\eta$ UP, DN (C0-180)	0.0,74.8
NOMINAL FLUX (lm)	89.7758	CIE CLASS	DIRECT	$\eta$ UP, DN (C180-360)	0.0,25.2
LAMPS INSIDE	1	$\eta$ up (%)	0.0	CIBSE SHR NOM	1.50
TEST VOLTAGE (V)	24	$\eta$ down (%)	100.0	CIBSE SHR MAX	1.50



C Range: 0 - 360DEG  
 C Interval: 22.5DEG  
 Test Speed: HIGH  
 Temperature: 24.3 °C  
 Operators:  
 Test Date: 2024-06-17

$\gamma$  Range: 0 - 90DEG  
 $\gamma$  Interval: 1.0DEG  
 Test System: EVERFINE GO-SPEX500\_V1 SYSTEM V2.00.460  
 Humidity: 65.0%  
 Test Distance: 3.080m [K=1.0000]  
 Remarks:

ZONAL FLUX DIAGRAM

ZONAL FLUX DIAGRAM:

γ	C0	C45	C90	C135	C180	C225	C270	C315	γ	Φ zone	Φ total	%lum, lamp
10	17.81	22.01	24.38	22.14	17.70	15.94	15.71	15.93	0- 10	1.766	1.766	1.97,1.97
20	17.02	27.02	33.27	27.14	16.84	14.71	13.72	14.86	10- 20	5.636	7.402	8.24,8.24
30	15.60	31.60	43.97	31.78	15.39	12.70	12.13	12.95	20- 30	9.924	17.33	19.3,19.3
40	13.62	34.72	55.61	35.00	13.34	10.74	10.53	11.02	30- 40	14.33	31.66	35.3,35.3
50	11.12	34.95	65.23	35.07	10.79	8.720	8.958	9.060	40- 50	18.05	49.71	55.4,55.4
60	8.303	29.53	58.42	29.07	7.922	6.667	6.534	6.814	50- 60	19.42	69.13	77,77
70	5.336	15.51	19.14	13.75	5.142	4.257	4.206	4.347	60- 70	14.08	83.21	92.7,92.7
80	2.260	3.399	3.242	2.938	2.222	1.877	1.976	1.917	70- 80	5.534	88.75	98.9,98.9
90	0.0134	0.0265	0.0234	0.0183	0.0052	0.0194	0.0200	0.0121	80- 90	1.030	89.78	100,100
100									90-100			
110									100-110			
120									110-120			
130									120-130			
140									130-140			
150									140-150			
160									150-160			
170									160-170			
180									170-180			
DEG	LUMINOUS INTENSITY:cd									UNIT:lm		

Conical surface Flux(90deg): 40.305 lm

%lum = 44.9%

%lamp = 44.9%

Conical surface Flux(130deg): 77.365 lm

%lum = 86.2%

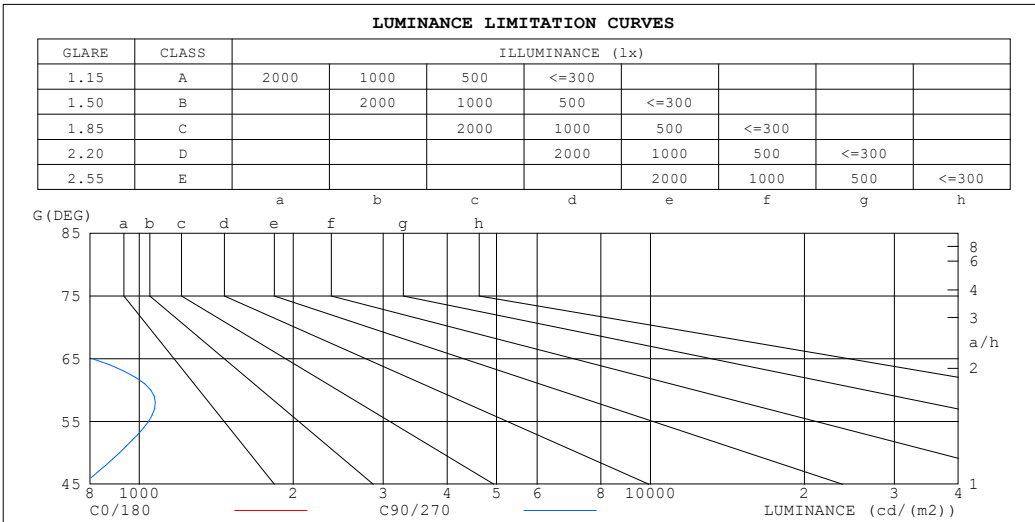
%lamp = 86.2%

C Range: 0 - 360DEG  
 C Interval: 22.5DEG  
 Test Speed: HIGH  
 Temperature:24.3℃  
 Operators:  
 Test Date:2024-06-17

γ Range: 0 - 90DEG  
 γ Interval: 1.0DEG  
 Test System:EVERFINE GO-SPEX500\_V1 SYSTEM V2.00.460  
 Humidity:65.0%  
 Test Distance:3.080m [K=1.0000]  
 Remarks:

**LUMINANCE LIMITATION CURVES**

Test:U:24.105V I:0.1340A P:3.0753W PF:0.9524 Freq:59.98Hz UTHDi:0.00% ITHDi:0.00% KDisp:0 Lamp Flux:89.7758x1 lm		
NAME: LSD09-5CCT-24V-WH	TYPE:	WEIGHT:
SPEC.: 5000K	DIM.:	SERIAL No.:
MFR.: LTS	SUR.:	Shielding Angle:



LUMINANCE cd/(m2)		
G (DEG)	C0/180	C90/270
85	95	61
80	117	168
75	130	305
70	140	504
65	146	810
60	149	1052
55	152	1042
50	155	914
45	157	777

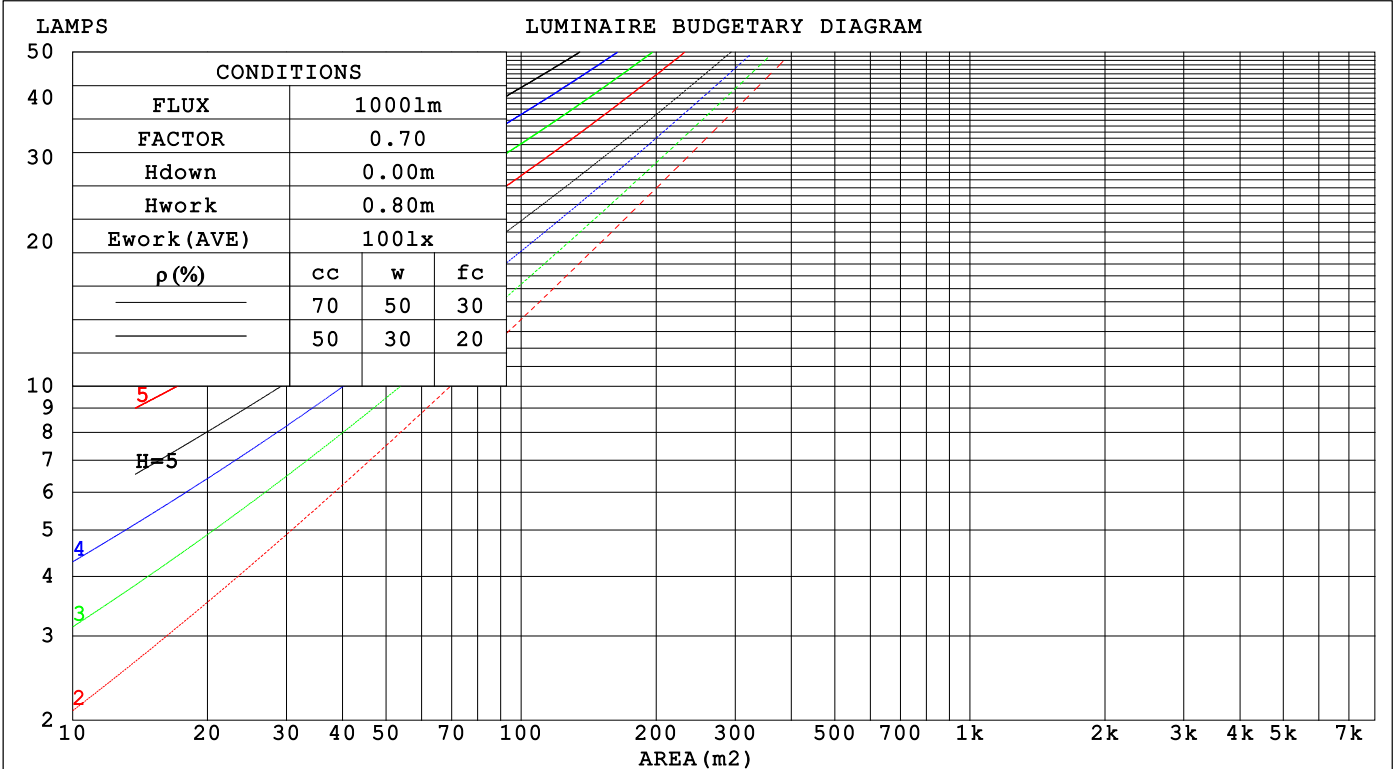
C Range: 0 - 360DEG  
 C Interval: 22.5DEG  
 Test Speed: HIGH  
 Temperature: 24.3°C  
 Operators:  
 Test Date: 2024-06-17

γ Range: 0 - 90DEG  
 γ Interval: 1.0DEG  
 Test System: EVERFINE GO-SPEX500\_V1 SYSTEM V2.00.460  
 Humidity: 65.0%  
 Test Distance: 3.080m [K=1.0000]  
 Remarks:

**CU AND LUMINAIRE BUDGETARY ESTIMATE DIAGRAM**

Test:U:24.105V I:0.1340A P:3.0753W PF:0.9524 Freq:59.98Hz		
UTHdi:0.00% ITHdi:0.00% KDisp:0 Lamp Flux:89.7758x1 lm		
NAME: LSD09-5CCT-24V-WH	TYPE:	WEIGHT:
SPEC.: 5000K	DIM.:	SERIAL No.:
MFR.: LTS	SUR.:	Shielding Angle:

ρcc	80%			70%			50%			30%			10%			0
ρw	50%	30%	10%	50%	30%	10%	50%	30%	10%	50%	30%	10%	50%	30%	10%	0
ρfc	20%			20%			20%			20%			20%			0
RCR	RCR:Room Cavity Ratio															
	Coefficients of Utilization(CU)															
0.0	1.19	1.19	1.19	1.16	1.16	1.16	1.11	1.11	1.11	1.06	1.06	1.06	1.02	1.02	1.02	1.00
1.0	1.03	.99	.95	1.01	.97	.94	.97	.94	.91	.93	.90	.88	.89	.87	.85	.83
2.0	.89	.82	.76	.87	.80	.75	.84	.78	.73	.80	.76	.71	.77	.73	.70	.68
3.0	.77	.68	.61	.75	.67	.61	.72	.65	.60	.70	.64	.59	.67	.62	.58	.55
4.0	.67	.58	.51	.66	.57	.50	.63	.56	.50	.61	.54	.49	.59	.53	.48	.46
5.0	.59	.50	.42	.58	.49	.42	.56	.48	.42	.54	.47	.41	.52	.46	.41	.38
6.0	.53	.43	.36	.52	.43	.36	.50	.42	.36	.48	.41	.35	.46	.40	.35	.33
7.0	.47	.38	.31	.46	.37	.31	.45	.37	.31	.43	.36	.31	.42	.35	.30	.28
8.0	.42	.33	.27	.42	.33	.27	.40	.33	.27	.39	.32	.27	.38	.31	.27	.25
9.0	.39	.30	.24	.38	.30	.24	.37	.29	.24	.36	.29	.24	.35	.28	.23	.22
10.0	.35	.27	.21	.35	.27	.21	.34	.26	.21	.33	.26	.21	.32	.26	.21	.19



C Range: 0 - 360DEG  
 C Interval: 22.5DEG  
 Test Speed: HIGH  
 Temperature:24.3℃  
 Operators:  
 Test Date:2024-06-17

γ Range: 0 - 90DEG  
 γ Interval: 1.0DEG  
 Test System:EVERFINE GO-SPEX500\_V1 SYSTEM V2.00.460  
 Humidity:65.0%  
 Test Distance:3.080m [K=1.0000]  
 Remarks:

WEC AND CCEC

Test:U:24.105V I:0.1340A P:3.0753W PF:0.9524 Freq:59.98Hz		
UTHDi:0.00% ITHDi:0.00% KDisp:0 Lamp Flux:89.7758x1 lm		
NAME: LSD09-5CCT-24V-WH	TYPE:	WEIGHT:
SPEC.: 5000K	DIM.:	SERIAL No.:
MFR.: LTS	SUR.:	Shielding Angle:

$\rho_{CC}$	80%			70%			50%			30%			10%			0
$\rho_w$	50%	30%	10%	50%	30%	10%	50%	30%	10%	50%	30%	10%	50%	30%	10%	0
$\rho_{fc}$	20%			20%			20%			20%			20%			0
RCR	RCR:Room Cavity Ratio						Wall Exitance Coefficients(WEC)									
0.0																
1.0	.318	.181	.057	.310	.177	.056	.297	.170	.054	.285	.164	.053	.274	.159	.051	
2.0	.305	.167	.051	.299	.165	.051	.287	.160	.050	.276	.155	.048	.266	.151	.047	
3.0	.285	.152	.045	.279	.150	.045	.269	.146	.044	.259	.142	.044	.250	.138	.043	
4.0	.264	.137	.040	.259	.136	.040	.250	.132	.040	.241	.129	.039	.233	.126	.039	
5.0	.244	.124	.036	.240	.123	.036	.231	.121	.035	.224	.118	.035	.216	.116	.035	
6.0	.226	.113	.032	.222	.112	.032	.215	.110	.032	.208	.108	.032	.201	.106	.031	
7.0	.210	.104	.029	.207	.103	.029	.200	.101	.029	.194	.099	.029	.188	.098	.029	
8.0	.196	.096	.027	.193	.095	.027	.187	.093	.027	.181	.092	.026	.176	.090	.026	
9.0	.183	.089	.025	.180	.088	.025	.175	.087	.025	.170	.085	.024	.165	.084	.024	
10.0	.172	.082	.023	.169	.082	.023	.164	.081	.023	.160	.079	.023	.156	.078	.022	

$\rho_{CC}$	80%			70%			50%			30%			10%			0
$\rho_w$	50%	30%	10%	50%	30%	10%	50%	30%	10%	50%	30%	10%	50%	30%	10%	0
$\rho_{fc}$	20%			20%			20%			20%			20%			0
RCR	RCR:Room Cavity Ratio						Ceiling Cavity Exitance Coefficients(CCEC)									
0.0	.190	.190	.190	.163	.163	.163	.111	.111	.111	.064	.064	.064	.020	.020	.020	
1.0	.181	.156	.134	.155	.134	.115	.106	.092	.080	.061	.053	.046	.020	.017	.015	
2.0	.174	.132	.096	.149	.113	.083	.102	.079	.058	.059	.046	.034	.019	.015	.011	
3.0	.167	.114	.072	.143	.099	.063	.099	.069	.044	.057	.040	.026	.018	.013	.008	
4.0	.161	.101	.056	.138	.088	.049	.095	.061	.034	.055	.036	.020	.018	.012	.007	
5.0	.154	.091	.045	.132	.079	.039	.091	.055	.028	.053	.032	.016	.017	.011	.005	
6.0	.147	.083	.037	.126	.072	.032	.087	.050	.023	.050	.030	.014	.016	.010	.005	
7.0	.140	.076	.032	.120	.066	.028	.083	.046	.020	.048	.027	.012	.016	.009	.004	
8.0	.133	.070	.027	.115	.061	.024	.079	.043	.017	.046	.025	.010	.015	.008	.003	
9.0	.127	.066	.024	.109	.057	.021	.076	.040	.015	.044	.024	.009	.014	.008	.003	
10.0	.121	.061	.022	.104	.053	.019	.072	.037	.013	.042	.022	.008	.014	.007	.003	

C Range: 0 - 360DEG  
 C Interval: 22.5DEG  
 Test Speed: HIGH  
 Temperature:24.3°C  
 Operators:  
 Test Date:2024-06-17

$\gamma$  Range: 0 - 90DEG  
 $\gamma$  Interval: 1.0DEG  
 Test System:EVERFINE GO-SPEX500\_V1 SYSTEM V2.00.460  
 Humidity:65.0%  
 Test Distance:3.080m [K=1.0000]  
 Remarks:

**UGR(Unified Glare Rating) Table**

Test:U:24.105V I:0.1340A P:3.0753W PF:0.9524 Freq:59.98Hz UTHDi:0.00% ITHDi:0.00% KDisp:0 Lamp Flux:89.7758x1 lm		
NAME: LSD09-5CCT-24V-WH	TYPE:	WEIGHT:
SPEC.: 5000K	DIM.:	SERIAL No.:
MFR.: LTS	SUR.:	Shielding Angle:

ceiling/cavity	0.7	0.7	0.5	0.5	0.3	0.7	0.7	0.5	0.5	0.3
walls	0.5	0.3	0.5	0.3	0.3	0.5	0.3	0.5	0.3	0.3
working plane	0.2	0.2	0.2	0.2	0.2	0.2	0.2	0.2	0.2	0.2

Room dimensions	Viewed crosswise					Viewed endwise				
x = 2H y = 2H	17.2	18.8	17.4	19.0	19.2	24.7	26.3	25.0	26.5	26.8
3H	18.0	19.5	18.3	19.8	20.0	25.7	27.2	26.0	27.5	27.7
4H	18.3	19.7	18.6	20.0	20.3	25.8	27.3	26.1	27.5	27.8
6H	18.5	19.8	18.8	20.1	20.4	25.8	27.1	26.1	27.4	27.7
8H	18.5	19.8	18.9	20.1	20.4	25.8	27.1	26.1	27.3	27.6
12H	18.5	19.8	18.9	20.1	20.4	25.7	27.0	26.1	27.3	27.6
4H 2H	19.5	21.0	19.8	21.2	21.5	24.8	26.2	25.1	26.5	26.8
3H	20.4	21.6	20.7	21.9	22.2	26.0	27.2	26.3	27.5	27.8
4H	20.6	21.8	21.0	22.1	22.4	26.1	27.3	26.5	27.6	27.9
6H	20.8	21.8	21.2	22.1	22.5	26.2	27.2	26.6	27.5	27.9
8H	20.8	21.8	21.2	22.1	22.5	26.2	27.1	26.6	27.5	27.8
12H	20.8	21.7	21.3	22.1	22.5	26.1	27.0	26.5	27.4	27.8
8H 4H	21.1	22.0	21.5	22.4	22.7	26.1	27.0	26.5	27.4	27.8
6H	21.3	22.1	21.7	22.5	22.9	26.2	27.0	26.6	27.4	27.8
8H	21.4	22.0	21.8	22.5	22.9	26.2	26.9	26.6	27.3	27.7
12H	21.4	22.0	21.9	22.4	22.9	26.2	26.7	26.6	27.2	27.7
12H 4H	21.1	21.9	21.5	22.3	22.7	26.1	26.9	26.5	27.3	27.7
6H	21.3	22.0	21.8	22.4	22.9	26.2	26.8	26.6	27.3	27.7
8H	21.4	22.0	21.9	22.4	22.9	26.2	26.7	26.6	27.2	27.7

Variations with the observer position at spacings(CIE Pub.117):		
S = 1.0H	+ 0.4 / - 0.4	+ 0.1 / - 0.1
1.5H	+ 0.4 / - 0.3	+ 0.6 / - 0.5
2.0H	+ 1.1 / - 1.5	+ 1.3 / - 2.4

CIE Pub.117, 89.78 lm Total Lamp Luminous Flux Correct (8log(F/F0) = -8.4)  
 Area: 0.111 m2

C Range: 0 - 360DEG	γ Range: 0 - 90DEG
C Interval: 22.5DEG	γ Interval: 1.0DEG
Test Speed: HIGH	Test System:EVERFINE GO-SPEX500_V1 SYSTEM V2.00.460
Temperature:24.3℃	Humidity:65.0%
Operators:	Test Distance:3.080m [K=1.0000]
Test Date:2024-06-17	Remarks:

**UTILIZATION FACTORS TABLE**

Test:U:24.105V I:0.1340A P:3.0753W PF:0.9524 Freq:59.98Hz UTHDi:0.00% ITHDi:0.00% KDisp:0 Lamp Flux:89.7758x1 lm		
NAME: LSD09-5CCT-24V-WH	TYPE:	WEIGHT:
SPEC.: 5000K	DIM.:	SERIAL No.:
MFR.: LTS	SUR.:	Shielding Angle:

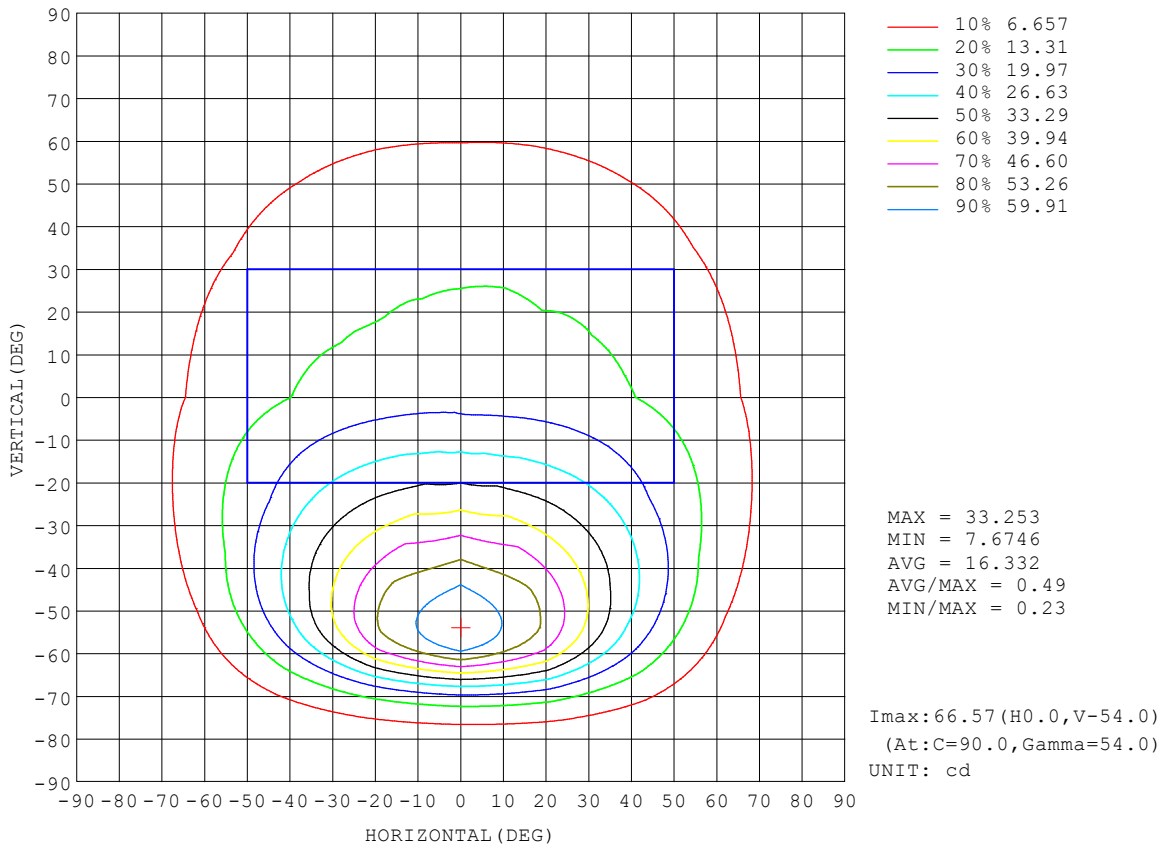
REFLECTANCE										
Ceiling	0.8	0.8	0.8	0.7	0.7	0.7	0.5	0.5	0.5	0
Walls	0.7	0.5	0.3	0.7	0.5	0.3	0.7	0.5	0.3	0
Working plane	0.2	0.2	0.2	0.2	0.2	0.2	0.2	0.2	0.2	0
ROOM INDEX	UTILIZATION FACTORS (PERCENT) $k(RI) \times RCR = 5$									
k = 0.60	51	39	31	51	38	31	49	38	31	24
0.80	62	49	41	61	49	41	59	48	41	33
1.00	72	60	52	71	59	51	68	61	51	43
1.25	80	68	60	78	68	60	75	66	59	51
1.50	85	74	67	83	74	66	80	72	65	57
2.00	93	84	77	91	83	76	88	80	75	66
2.50	97	89	83	95	88	82	91	85	80	71
3.00	101	94	88	99	92	87	95	89	85	76
4.00	105	100	95	103	98	93	99	94	91	82
5.00	108	103	99	106	101	97	101	97	94	85
ROOM INDEX	UF(total)									Direct
According to DIN EN 13032-2 2004			Suspended				SHRNOM = 1.25			

C Range: 0 - 360DEG  
 C Interval: 22.5DEG  
 Test Speed: HIGH  
 Temperature: 24.3°C  
 Operators:  
 Test Date: 2024-06-17

γ Range: 0 - 90DEG  
 γ Interval: 1.0DEG  
 Test System: EVERFINE GO-SPEX500\_V1 SYSTEM V2.00.460  
 Humidity: 65.0%  
 Test Distance: 3.080m [K=1.0000]  
 Remarks:

ISOCANDELA DIAGRAM

Test:U:24.105V I:0.1340A P:3.0753W PF:0.9524 Freq:59.98Hz UTHDi:0.00% ITHDi:0.00% KDisp:0 Lamp Flux:89.7758x1 lm		
NAME: LSD09-5CCT-24V-WH	TYPE:	WEIGHT:
SPEC.: 5000K	DIM.:	SERIAL No.:
MFR.: LTS	SUR.:	Shielding Angle:



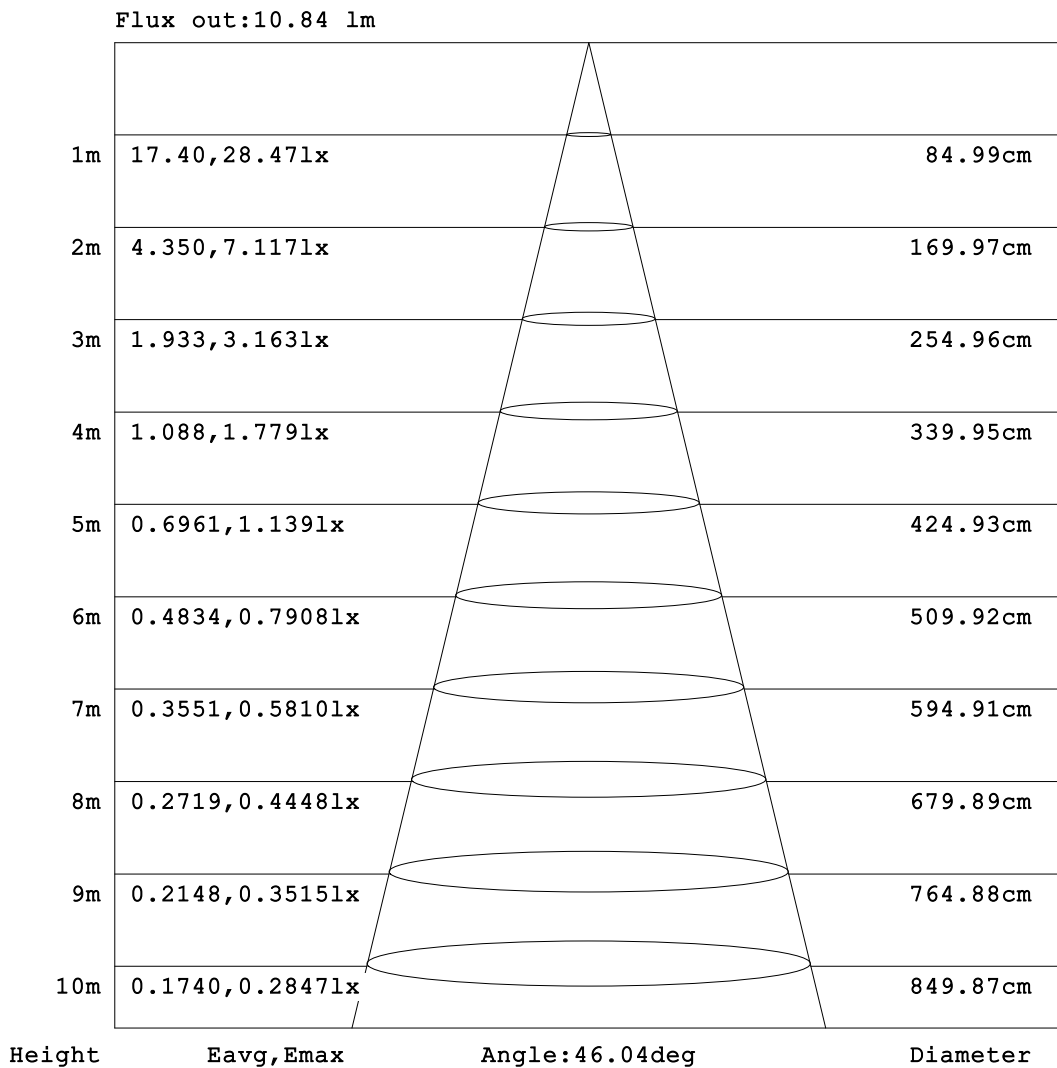
C Range: 0 - 360DEG  
 C Interval: 22.5DEG  
 Test Speed: HIGH  
 Temperature: 24.3°C  
 Operators:  
 Test Date: 2024-06-17

γ Range: 0 - 90DEG  
 γ Interval: 1.0DEG  
 Test System: EVERFINE GO-SPEX500\_V1 SYSTEM V2.00.460  
 Humidity: 65.0%  
 Test Distance: 3.080m [K=1.0000]  
 Remarks:



**AAI Figure**

Test:U:24.105V I:0.1340A P:3.0753W PF:0.9524 Freq:59.98Hz UTHDi:0.00% ITHDi:0.00% KDisp:0 Lamp Flux:89.7758x1 lm		
NAME: LSD09-5CCT-24V-WH	TYPE:	WEIGHT:
SPEC.: 5000K	DIM.:	SERIAL No.:
MFR.: LTS	SUR.:	Shielding Angle:



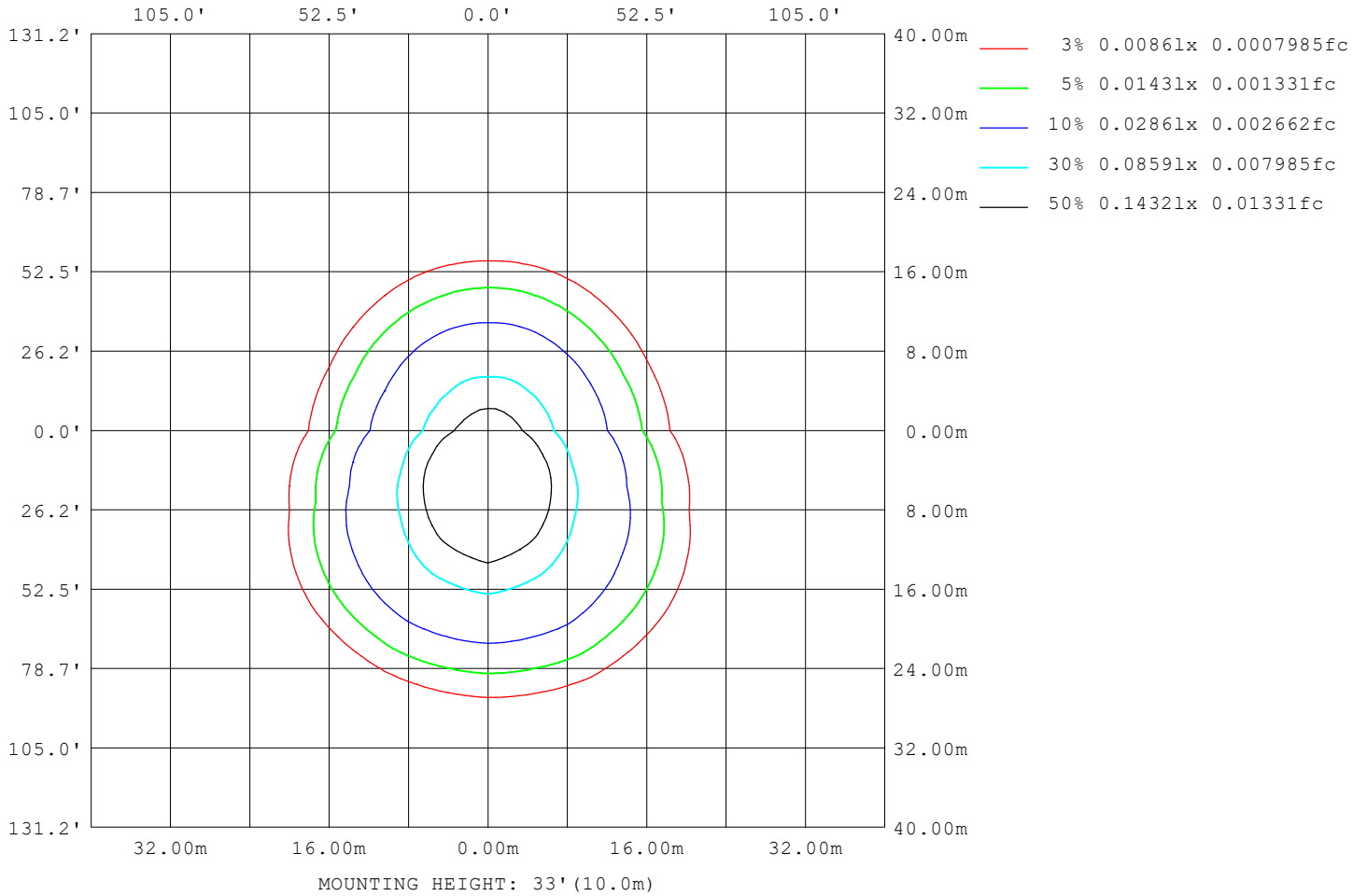
Note:The Curves indicate the illuminated area and the average illumination when the luminaire is at different distance.

C Range: 0 - 360DEG  
 C Interval: 22.5DEG  
 Test Speed: HIGH  
 Temperature:24.3°C  
 Operators:  
 Test Date:2024-06-17

γ Range: 0 - 90DEG  
 γ Interval: 1.0DEG  
 Test System:EVERFINE GO-SPEX500\_V1 SYSTEM V2.00.460  
 Humidity:65.0%  
 Test Distance:3.080m [K=1.0000]  
 Remarks:

**ISOLUX DIAGRAM**

Test:U:24.105V I:0.1340A P:3.0753W PF:0.9524 Freq:59.98Hz UTHDi:0.00% ITHDi:0.00% KDisp:0 Lamp Flux:89.7758x1 lm		
NAME: LSD09-5CCT-24V-WH	TYPE:	WEIGHT:
SPEC.: 5000K	DIM.:	SERIAL No.:
MFR.: LTS	SUR.:	Shielding Angle:



C Range: 0 - 360DEG  
 C Interval: 22.5DEG  
 Test Speed: HIGH  
 Temperature:24.3°C  
 Operators:  
 Test Date:2024-06-17

γ Range: 0 - 90DEG  
 γ Interval: 1.0DEG  
 Test System:EVERFINE GO-SPEX500\_V1 SYSTEM V2.00.460  
 Humidity:65.0%  
 Test Distance:3.080m [K=1.0000]  
 Remarks:

**LED Avg.L Report**

Test:U:24.105V I:0.1340A P:3.0753W PF:0.9524 Freq:59.98Hz UTHDi:0.00% ITHDi:0.00% KDisp:0 Lamp Flux:89.7758x1 lm		
NAME: LSD09-5CCT-24V-WH	TYPE:	WEIGHT:
SPEC.: 5000K	DIM.:	SERIAL No.:
MFR.: LTS	SUR.:	Shielding Angle:

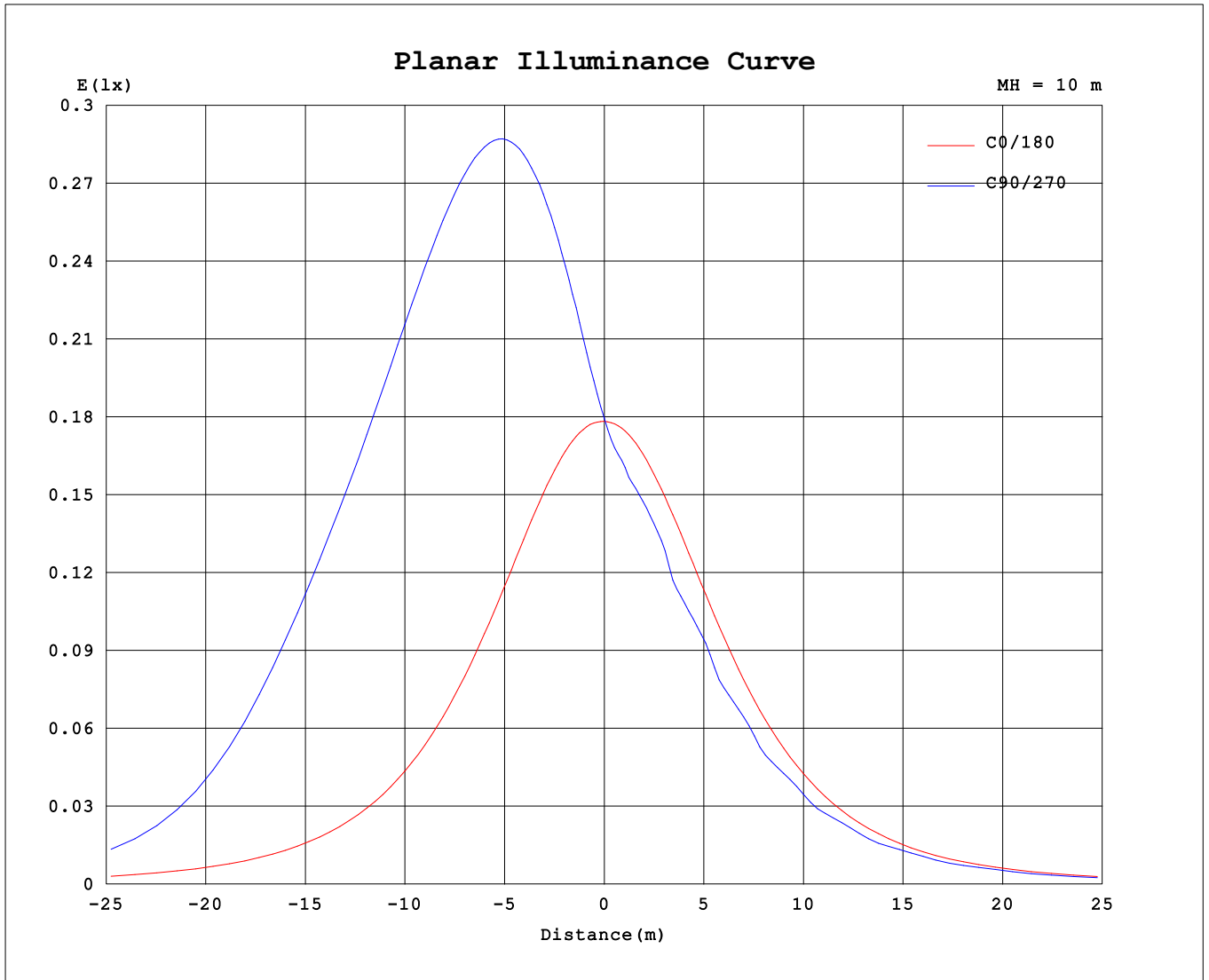
AvgL	cd/m2
L_0~180 (65) av	143
L_0~180 (75) av	129
L_0~180 (85) av	97
L_90~270 (65) av	463
L_90~270 (75) av	205
L_90~270 (85) av	77
L_45 (65) av	304
L_45 (75) av	183
L_45 (85) av	81

Standard: GB/T 29293-2012

C Range: 0 - 360DEG  
 C Interval: 22.5DEG  
 Test Speed: HIGH  
 Temperature:24.3℃  
 Operators:  
 Test Date:2024-06-17

γ Range: 0 - 90DEG  
 γ Interval: 1.0DEG  
 Test System:EVERFINE GO-SPEX500\_V1 SYSTEM V2.00.460  
 Humidity:65.0%  
 Test Distance:3.080m [K=1.0000]  
 Remarks:

Planar Illuminance Curve



C Range: 0 - 360DEG  
 C Interval: 22.5DEG  
 Test Speed: HIGH  
 Temperature: 24.3 °C  
 Operators:  
 Test Date: 2024-06-17

γ Range: 0 - 90DEG  
 γ Interval: 1.0DEG  
 Test System: EVERFINE GO-SPEX500\_V1 SYSTEM V2.00.460  
 Humidity: 65.0%  
 Test Distance: 3.080m [K=1.0000]  
 Remarks:

LUMINOUS DISTRIBUTION INTENSITY DATA

Test:U:24.105V I:0.1340A P:3.0753W PF:0.9524 Freq:59.98Hz UTHDi:0.00% ITHDi:0.00% KDisp:0 Lamp Flux:89.7758x1 lm		
NAME: LSD09-5CCT-24V-WH	TYPE:	WEIGHT:
SPEC.: 5000K	DIM.:	SERIAL No.:
MFR.: LTS	SUR.:	Shielding Angle:

Table--1

UNIT: cd

C (DEG) \ γ (DEG)	0	22.5	45	67.5	90	112.5	135	157.5	180	202.5	225	247.5	270	292.5	315	337.5			
0	17.9	17.9	17.9	17.9	17.9	17.9	17.9	17.9	17.9	17.9	17.9	17.9	17.9	17.9	17.9	17.9			
5	17.9	18.9	19.8	20.4	20.7	20.5	19.8	18.9	17.9	17.2	16.8	16.6	16.5	16.5	16.7	17.2			
10	17.8	19.8	22.0	23.7	24.4	23.7	22.1	19.8	17.7	16.5	15.9	15.8	15.7	15.8	15.9	16.6			
15	17.5	20.7	24.5	27.4	28.6	27.5	24.6	20.8	17.3	15.9	15.4	15.2	15.1	15.2	15.4	16.0			
20	17.0	21.4	27.0	31.5	33.3	31.6	27.1	21.6	16.8	15.0	14.7	13.9	13.7	14.0	14.9	15.3			
25	16.4	22.0	29.4	35.9	38.4	35.9	29.6	22.2	16.2	14.3	13.7	13.4	13.4	13.5	13.6	14.6			
30	15.6	22.3	31.6	40.4	44.0	40.4	31.8	22.5	15.4	13.5	12.7	12.7	12.1	12.7	13.0	13.8			
35	14.7	22.3	33.4	45.0	49.8	45.0	33.6	22.5	14.4	12.6	12.0	11.6	11.7	11.8	12.3	12.9			
40	13.6	21.9	34.7	49.2	55.6	49.2	35.0	22.1	13.3	11.5	10.7	10.6	10.5	10.6	11.0	11.6			
45	12.4	21.1	35.3	52.5	61.0	52.6	35.6	21.1	12.1	10.2	10.01	9.92	9.80	10.1	10.2	10.6			
50	11.1	19.8	35.0	54.4	65.2	54.6	35.1	19.7	10.8	9.14	8.72	8.67	8.96	8.87	9.06	9.56			
55	9.74	17.9	33.2	54.1	66.4	54.4	33.1	17.6	9.38	8.03	7.82	7.69	7.74	7.73	7.83	8.21			
60	8.30	15.4	29.5	49.1	58.4	48.4	29.1	14.9	7.92	6.75	6.67	6.72	6.53	6.76	6.81	7.05			
65	6.89	12.4	23.5	35.8	38.0	33.3	22.4	11.6	6.57	5.55	5.44	5.57	5.40	5.63	5.62	5.74			
70	5.34	8.82	15.5	19.4	19.1	17.3	13.8	8.09	5.14	4.35	4.26	4.34	4.21	4.37	4.35	4.44			
75	3.76	5.37	8.08	9.13	8.78	8.06	6.88	5.02	3.65	3.14	3.05	3.05	3.02	3.06	3.04	3.14			
80	2.26	2.71	3.40	3.56	3.24	3.13	2.94	2.60	2.22	1.96	1.88	1.83	1.98	1.91	1.92	1.90			
85	0.92	0.93	0.81	0.65	0.59	0.61	0.73	0.94	0.96	0.87	0.81	0.88	0.90	0.88	0.80	0.77			
90	0.01	0.01	0.03	0.02	0.02	0.02	0.02	0.01	0.01	0.01	0.02	0.02	0.02	0.02	0.01	0.01			

C Range: 0 - 360DEG  
 C Interval: 22.5DEG  
 Test Speed: HIGH  
 Temperature:24.3℃  
 Operators:  
 Test Date:2024-06-17

γ Range: 0 - 90DEG  
 γ Interval: 1.0DEG  
 Test System:EVERFINE GO-SPEX500\_V1 SYSTEM V2.00.460  
 Humidity:65.0%  
 Test Distance:3.080m [K=1.0000]  
 Remarks: